

PROFESSIONAL DRESS

HOW TO DRESS FOR AN INTERVIEW

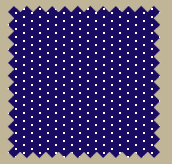
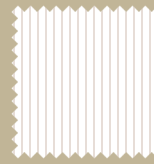


SUITS

Interview dress is typically *business professional*. This includes a suit jacket with matching slacks or skirt.

COLORS

Colors should be dark neutral colors. Light colors and subtle prints can be worn underneath.



TOPS

Button downs and blouses can be worn under a suit jacket for an interview. Dresses in a solid neutral color and appropriate length can also be worn with a suit jacket.

For work in a *business casual* office, button downs, polos, blouses and sweaters are appropriate on their own or with a jacket or cardigan. Regardless, for an interview, a suit is still the appropriate choice.

SHOES & ACCESSORIES

Flat or low heel **dress shoes** with a closed toe are the best choice for an interview. Shoes should be clean worn with socks or neutral stockings.

When appropriate, **ties** and **belts** should match outfit.

Carry a **professional bag or briefcase** to hold your personal belongings and essentials for the interview (copies of your resume, notes, research, portfolio, etc).

Jewelry should be minimal. **Piercings and tattoos** may be visible depending on the company's standards.



GROOMING

If worn, makeup should be light and neutral. Clean and maintain facial hair, nails, and hair. Avoid strong colognes and perfumes.

