



**SALVE REGINA  
UNIVERSITY**

## Salve Regina University

100 Ochre Point Avenue Newport, RI 02840

[www.Salve.edu](http://www.Salve.edu)

### Introduction

Salve Regina University, herein after referred to as the "University," invites qualified and experienced vendors to submit their proposals for the procurement of residence hall furniture. This Request for Bid ("RFB") outlines the desired furniture styles and quantities as well as the bid procedure.

From our cornerstone mercy mission to the classic ideals of our liberal arts approach, tradition matters at Salve Regina. It's woven throughout our 80-acre campus, embedded in our historic buildings, and infused in the culture of Newport, Rhode Island.

Tradition at Salve Regina means we remember where we began. Since our founding by the Sisters of Mercy in 1934, we have grown to a community of more than 2,800 undergraduate and graduate students who proudly carry forward our mission in their personal and professional lives. Fully accredited by the New England Commission of Higher Education, we are committed to fueling the imagination and encouraging the academic ambitions of our bright and curious students.

### Bid Overview

Project Name: [Salve Regina Dormitory Furniture](#)

Project Location: Munroe and Shepard Ave Dorm, Shepard Ave., Newport RI

Project Duration: June- August 25, 2025 and 2026

## Key Dates

RFP Issuance: 3/28/25

Questions due: 4/10/25

Salve responses issued: 4/17/25

Proposal due: 4/28/25

Estimated Award no later than: 5/19/25

Estimated Contract no later than: 6/2/25

## Furniture delivery/installation:

Munroe, 70 Shepard Ave.- Week of 8/25/25

Shepard Ave. Dorm- Week of 8/17/26

Point of Contact: Salve Regina Purchasing Office

Email Address: [purchasingoffice@salve.edu](mailto:purchasingoffice@salve.edu)

Phone Number: 401-341-2343

## Scope of Work

Munroe Building, 70 Shepard Ave.: Salve Regina University is currently renovating a small existing building (Munroe) from office to residences. The new residence will include 8 apartment style suites with 24 total beds. Each suite will have an open living/dining area and bedroom(s) which will require furniture. For specific information on the quantities, styles and dimensional requirements, please see the attached Bid Form. The renovation project is due to be completed by August of 2025 in time for Fall occupancy beginning September 1, 2025. Delivery and installation/set-up of this furniture will be scheduled for the week of August 25<sup>th</sup> through 29<sup>th</sup>.

Shepard Ave. Dormitory: Salve Regina University is currently constructing a new residence hall. The new building will include 24 hotel style rooms (with no kitchen or living room), 29 apartment style suites, one common kitchen, and six common lounges. There is a total of 203 student beds requiring room furniture. Each suite will have an open living/dining area. For specific information on the quantities, styles and dimensional requirements, please see the attached sheet Bid Form. The new construction project is due to be completed by August of 2026 in time for Fall occupancy beginning August 31, 2026. Delivery and installation/set-up of this furniture is anticipated to be scheduled for the weeks of August 17<sup>th</sup> and 24<sup>th</sup>, 2026.

The University may elect to extend the contract for the proposed furniture to additional projects or individual pieces as needed.

**This RFB includes a range of furniture for the entire building including kitchen, bedroom and lounge. We encourage potential vendors to consider bids on any or all pieces of furniture.**

## Vendor Responsibilities

### Project Consultation:

- Provide single point of contact
- Provide expert advice on final furniture and finish selection
- Confirm furniture layout fits in designed spaces
- Liaise with university on timelines and schedules

### Product Requirements:

- Wood furniture: Finish materials shall be of best quality to give hard durable smooth, liquid resistant finish. All surfaces exposed to view in normal use shall be smoothly machined and sanded. The application of finishing materials shall be controlled to produce items of uniform finish without sags, runs, orange peel, overspray or other defects detrimental to a smooth quality appearance. Finish shall be UV cured urethane and/or water base acrylic. Finishing process shall be environmentally friendly and emit no Volatile Organic Compounds (V.O.C.'s) into the atmosphere.

### Delivery and Installation Services:

- Provide delivery, assembly and installation (including disposal of all packaging) of furniture as requested
- Meet delivery and installation schedules
- Replace any damaged items

### Warranty and Support:

- Provide comprehensive product documentation, including warranty information.
- Specify the support and maintenance services offered during the warranty period and length of warranty period.
- Specify long-term support options after the warranty period.

## Submission Requirements

- Vendors are required to submit the following information/documents in a detailed proposal:
  - Description of the proposed furniture and options including detailed material and construction specifications.
  - Completed Bid Form including Item net and unit price and an extended total for the item, listed in US dollars.

- Timeline for contract, finalization/selection of options, order, delivery, and installation for each project to meet the schedule. Typical lead time after receipt of order.
- Any available financing options or discounts offered.
- Any additional services or features offered.
- Tax Exempt: The University is a tax-exempt entity. All bids should reflect no sales tax included in the final submission.
- Exclusions: If any exclusions exist as a part of this proposal, vendors must clearly define them in a section labeled exclusions.

## Evaluation Criteria

The University will evaluate proposals based on the following criteria:

- Compliance with specifications and requirements.
- Cost competitiveness.
- Vendor's experience and references.
- Proposed timeline.
- Warranty and support offerings.

## How to Submit a Proposal

Interested vendors should submit their proposals electronically in PDF format to [purchasingoffice@salve.edu](mailto:purchasingoffice@salve.edu) no later than April 28, 2025. Please include "Residence Hall Furniture RFB – Salve Regina University" in the subject line. Late responses may not be accepted.

## Clarifications and Questions

All inquiries and requests for clarifications must be submitted in writing via email to [purchasingoffice@salve.edu](mailto:purchasingoffice@salve.edu) by 4/10/25. The University will respond to all questions by 4/17/25.

## Confidentiality

All information submitted in response to this RFB will be treated as confidential and used solely for the purpose of evaluating vendor bids.

## Bid Review/Right to Reject

Bids will be reviewed to verify they meet all specified criteria in this RFB. This may include contacting references furnished in the vendor's bid, requesting reports on the vendor's financial stability, conducting samples of the vendor's proposed product(s) and reviewing results of past awards to the vendor by the University. The University reserves the right to reject any or all bid received and to waive any irregularities or informalities in the bids.

## Contractual Agreement/Terms and Conditions

The selected vendor(s) will be required to enter into a formal cost reimbursable contract with Salve Regina University that outlines the terms and conditions of the engagement. The proposed pricing structure/contract duration is three years from the date of contract with two additional one-year extensions possible depending on University needs.

Selection of a vendor does not create an exclusive relationship.

## Conclusion

The University looks forward to receiving competitive bids from qualified vendors. By submitting a bid, vendors acknowledge their understanding and acceptance of the terms and conditions outlined in this RFB. The awarded contract terms and conditions will be separately documented.

## Other Information

Group Pricing: The University belongs to or participates in several procurement consortiums such as the Educational and Institutional Cooperative Service, Inc. (E&I) and the Massachusetts Higher Education Consortium (MHEC). Bidders are advised to take into consideration these associations when pricing responses.

## Attachments:

Shepard Ave Dorm Room list

Bid Forms

Sample Floor Plans with furniture layout

## Known Challenges

- 1) Scheduling Constraints: Timely delivery of furniture will be essential for a smooth delivery of the new and renovated spaces. Coordination with the timing of the construction and student move in will be key.

Shepard Ave room list

| Room #      | Total beds | single | double | triple | kitchen table (rectangle) | kitchen round | dining chair | arm chair | couch (2 seat) | couch (3 seat) | coffee table(sm) | coffee table(lg) | Credenza/tv stand | end tables | "Hotel" style room |
|-------------|------------|--------|--------|--------|---------------------------|---------------|--------------|-----------|----------------|----------------|------------------|------------------|-------------------|------------|--------------------|
| 200         | 6          | 2      | 2      | 2      |                           | 1             |              | 4         |                | 1              |                  | 1                |                   | 1          | FALSE              |
| 201         | 2          | 2      |        | 0      |                           | 0             |              |           |                |                |                  |                  |                   |            | TRUE               |
| 202         | 2          | 0      |        | 1      |                           | 0             |              |           |                |                |                  |                  |                   |            | TRUE               |
| 203         | 2          | 0      |        | 1      |                           | 0             |              |           |                |                |                  |                  |                   |            | TRUE               |
| Lounge 204  |            |        |        |        |                           |               |              |           | 4              |                | 2                |                  | 1                 |            | FALSE              |
| 205         | 6          | 2      | 2      |        |                           | 1             |              | 4         | 1              | 1              |                  | 1                |                   | 1          | FALSE              |
| 206         | 6          | 2      | 2      |        |                           | 1             |              | 4         |                | 1              |                  | 1                |                   | 1          | FALSE              |
| 209         | 2          | 2      |        |        |                           |               |              |           |                |                |                  |                  |                   |            | TRUE               |
| 211         | 2          |        |        | 1      |                           |               |              |           |                |                |                  |                  |                   |            | TRUE               |
| 213         | 2          |        |        | 1      |                           |               |              |           |                |                |                  |                  |                   |            | TRUE               |
| 214         | 3          |        |        |        |                           | 1             |              |           |                |                |                  |                  |                   |            | TRUE               |
| Lounge 215  |            |        |        |        |                           |               |              |           | 4              | 1              |                  | 1                |                   | 1          | 4                  |
| 216         | 3          |        |        |        |                           | 1             |              |           |                |                |                  |                  |                   |            | TRUE               |
| AC Apt 217  | 1          |        |        |        |                           | 0             | 1            | 4         | 2              | 1              |                  | 1                |                   |            | 2                  |
| 218         | 2          |        |        | 1      |                           |               |              |           |                |                |                  |                  |                   |            | TRUE               |
| kitchen 219 |            |        |        |        |                           | 0             | 3            | 12        |                |                |                  |                  |                   |            | FALSE              |
| 220         | 4          | 2      | 1      |        |                           | 1             |              | 4         | 2              | 1              |                  | 1                |                   | 1          | FALSE              |
| 221         | 6          | 2      | 2      |        |                           | 1             |              | 4         |                | 1              |                  | 1                |                   | 1          | FALSE              |
| 223         | 6          | 2      | 2      |        |                           | 1             |              | 4         | 1              | 1              |                  | 1                |                   | 1          | FALSE              |
| 224         | 4          | 2      | 1      |        |                           | 1             |              | 4         | 2              | 1              |                  | 1                |                   | 1          | FALSE              |
| 225         | 6          | 2      | 2      |        |                           | 1             |              | 4         |                | 1              |                  | 1                |                   | 1          | FALSE              |
| 300         | 6          | 2      | 2      |        |                           | 1             |              | 4         |                | 1              |                  | 1                |                   | 1          | FALSE              |
| 301         | 2          | 2      | 0      |        |                           | 0             |              |           |                |                |                  |                  |                   |            | TRUE               |
| 302         | 2          | 0      | 1      |        |                           | 0             |              |           |                |                |                  |                  |                   |            | TRUE               |
| 303         | 2          | 0      | 1      |        |                           | 0             |              |           |                |                |                  |                  |                   |            | TRUE               |
| 304         | 6          | 2      | 2      |        |                           | 1             |              | 4         | 1              | 1              |                  | 1                |                   | 1          | FALSE              |
| Lounge 305  |            |        |        |        |                           |               |              |           | 4              |                | 2                |                  | 1                 |            | FALSE              |
| 306         | 6          | 2      | 2      |        |                           | 1             |              | 4         |                | 1              |                  | 1                |                   | 1          | FALSE              |
| 309         | 2          | 2      |        |        |                           |               |              |           |                |                |                  |                  |                   |            | TRUE               |
| 310         | 2          |        |        | 1      |                           |               |              |           |                |                |                  |                  |                   |            | TRUE               |
| 312         | 2          |        |        | 1      |                           |               |              |           |                |                |                  |                  |                   |            | TRUE               |
| 314         | 6          | 2      | 2      |        |                           | 1             |              | 4         | 1              | 1              |                  | 1                |                   | 1          | FALSE              |
| 315         | 2          |        |        | 2      |                           |               |              |           |                |                |                  |                  |                   |            | TRUE               |
| 316         | 6          | 2      | 2      |        |                           | 1             |              | 4         | 1              | 1              |                  | 1                |                   | 1          | FALSE              |
| 319         | 6          | 2      | 2      |        |                           | 1             |              | 4         |                | 1              |                  | 1                |                   | 1          | FALSE              |
| Lounge 320  |            |        |        |        |                           | 0             | 1            | 4         | 2              | 2              |                  |                  | 1                 |            | FALSE              |
| 322         | 6          | 2      | 2      |        |                           | 1             |              | 4         | 1              | 1              |                  | 1                |                   | 1          | FALSE              |
| 324         | 6          | 2      | 2      |        |                           | 1             |              | 4         |                | 1              |                  | 1                |                   | 1          | FALSE              |

Shepard room list

| Room #       | Total beds | single    | double    | triple   | kitchen table (rectangle) | kitchen round | dining chair | arm chair  | couch (2 seat) | couch (3 seat) | coffee table(sm) | coffee table(lg) | Credenza/tv stand | end tables | "Hotel" style room |           |
|--------------|------------|-----------|-----------|----------|---------------------------|---------------|--------------|------------|----------------|----------------|------------------|------------------|-------------------|------------|--------------------|-----------|
| 323          | 4          | 2         | 1         |          |                           | 1             |              |            | 2              | 1              |                  | 1                |                   |            | 1                  | FALSE     |
| 326          | 4          | 2         | 1         |          |                           | 1             |              |            | 2              | 1              |                  | 1                |                   |            | 1                  | FALSE     |
| 400          | 6          | 2         | 2         |          |                           | 1             |              |            |                | 1              |                  |                  |                   |            | 1                  | FALSE     |
| 401          | 2          | 2         | 0         |          |                           | 0             |              |            |                |                |                  |                  |                   |            |                    | TRUE      |
| 406          | 2          | 0         | 1         |          |                           | 0             |              |            |                |                |                  |                  |                   |            |                    | TRUE      |
| 405          | 2          | 0         | 1         |          |                           | 0             |              |            |                |                |                  |                  |                   |            |                    | TRUE      |
| 402          | 6          | 2         | 2         |          |                           | 1             |              | 4          | 1              | 1              |                  | 1                |                   |            | 1                  | FALSE     |
| Lounge 403   |            |           |           |          |                           |               |              | 4          |                |                | 2                |                  | 1                 |            |                    | FALSE     |
| 409          | 6          | 2         | 2         |          |                           | 1             |              | 4          |                | 1              |                  | 1                |                   |            | 1                  | FALSE     |
| 410          | 2          | 2         |           |          |                           |               |              |            |                |                |                  |                  |                   |            |                    | TRUE      |
| 412          | 2          | 2         |           |          |                           |               |              |            |                |                |                  |                  |                   |            |                    | TRUE      |
| 411          | 2          |           | 1         |          |                           |               |              |            |                |                |                  |                  |                   |            |                    | TRUE      |
| 414          | 6          | 2         | 2         |          |                           | 1             |              | 4          | 1              | 1              |                  | 1                |                   |            | 1                  | FALSE     |
| 423          | 2          |           | 1         |          |                           |               |              |            |                |                |                  |                  |                   |            |                    | TRUE      |
| 413          | 5          | 3         | 1         |          |                           | 1             |              | 4          | 1              | 1              |                  | 1                |                   |            | 1                  | FALSE     |
| 415          | 6          | 2         | 2         |          |                           | 1             |              | 4          |                | 1              |                  | 1                |                   |            | 1                  | FALSE     |
| Lounge 419   |            |           |           |          |                           | 0             | 1            | 4          | 2              | 2              |                  |                  | 1                 |            |                    | FALSE     |
| 420          | 6          | 2         | 2         |          |                           | 1             |              | 4          | 1              | 1              |                  | 1                |                   |            | 1                  | FALSE     |
| 422          | 6          | 2         | 2         |          |                           | 1             |              | 4          |                | 1              |                  | 1                |                   |            | 1                  | FALSE     |
| 421          | 4          | 2         | 1         |          |                           | 1             |              | 4          | 2              | 1              |                  | 1                |                   |            | 1                  | FALSE     |
| 424          | 4          | 2         | 1         |          |                           | 1             |              | 4          | 2              | 1              |                  | 1                |                   |            | 1                  | FALSE     |
| <b>Total</b> | <b>204</b> | <b>71</b> | <b>64</b> | <b>2</b> | <b>2</b>                  | <b>28</b>     | <b>6</b>     | <b>136</b> | <b>44</b>      | <b>34</b>      | <b>6</b>         | <b>30</b>        | <b>5</b>          | <b>29</b>  | <b>6</b>           | <b>24</b> |
| minus AC     | 1          |           |           |          |                           |               |              |            |                |                |                  |                  |                   |            |                    |           |
| 6 bed suite  | 21         |           |           |          |                           |               |              |            |                |                |                  |                  |                   |            |                    |           |
| 4 bed suite  | 6          |           |           |          |                           |               |              |            |                |                |                  |                  |                   |            |                    |           |
| 5 bed suite  | 1          |           |           |          |                           |               |              |            |                |                |                  |                  |                   |            |                    |           |



Bid Form - Munroe; Delivery August 2025

General notes:

- Wood furniture - solid oak / veneer tops; color options: natural, other?
- Floor glides/feet - nylon, adjustable
- Delivery to include uncrating, assembly, installation and removal of all packaging material

| Description   | Quantity | proposed dimensions        | unit cost | actual dimensions | delivery and installation | shipping/ freight | Total |
|---|----------|----------------------------|-----------|-------------------|---------------------------|-------------------|-------|
| <b>1</b> mattress, innerspring, foam encased, nylon cover; bed bug proof and water proof  | 24       | 36"X80"X7"                 |           |                   |                           |                   |       |
| <b>2</b> Bunkable/loftable twin (XL) - bed ends (set), solid wood; with angle iron spring (easy connect)                            | 24       | 2.5" X 2.5" posts; 36"X80" |           |                   |                           |                   |       |
| <b>2a</b> loft kit option   | 4        |                            |           |                   |                           |                   |       |
| <b>3</b> 2 drawer stackable (must fit under the bed at its lowest setting); heavy duty drawer slides                                | 24       | 30 to 36" width            |           |                   |                           |                   |       |
| <b>4</b> Wardrobe - 2 door, 2 drawer, with shelf and rod; 270 degree, heavy duty hinges   | 24       | 36"x25"x72"                |           |                   |                           |                   |       |
| <b>4a</b> ADA compatible Wardrobe - 2 door, 2 drawer, with shelf and rod; 270 degree, heavy duty hinges and door slides; wire pulls | 24       | 36"x25"x72"                |           |                   |                           |                   |       |
| <b>5</b> Panel end Desk - solid oak, no drawers, ADA compliant  | 24       | 48"x24"x30"                |           |                   |                           |                   |       |

3/24/2025

request for quotes outline

|    | Description  | Quantity | proposed dimensions   | unit cost | actual dimensions | delivery and installation | shipping/ freight | Total |
|----|--|----------|---|-----------|-------------------|---------------------------|-------------------|-------|
| 5a | Table Desk - solid oak, pencil drawer, ADA compliant; heavy duty drawer slides | 24       | 48"x24"x30"   |           |                   |                           |                   |       |
| 6  | Chair - solid oak, 2 position, armless, solid wood back and seat               | 24       | 18"X22.5"X32"   |           |                   |                           |                   |       |
|    | <b>Dining</b>  |          | wood  |           |                   |                           |                   |       |
| 7  | square or round kitchen table with legs (no pedestal base) (small)             | 4        | 36" round   |           |                   |                           |                   |       |
| 7a | option   | 4        | 32" square  |           |                   |                           |                   |       |
| 8  | large  | 0        | 42" round   |           |                   |                           |                   |       |
| 8a | option   | 0        | 36"X60"   |           |                   |                           |                   |       |
| 9  | dining chairs - ladder back; solid wood  | 16       | 18"X22"   |           |                   |                           |                   |       |
|    |  |          |   |           |                   |                           |                   |       |
|    |  |          |   |           |                   |                           |                   |       |
|    | <b>living room/lounge</b>  |          | "soft" arm rests; Fabric Grade A/1; material options = washable/removable cloth with pattern - no light colors; option faux leather |           |                   |                           |                   |       |
| 10 | couch (2 seat)   | 4        | approx. 56"X33"X32"   |           |                   |                           |                   |       |

|     | Description                       | Quantity | proposed dimensions         | unit cost | actual dimensions | delivery and installation | shipping/ freight | Total |
|-----|-----------------------------------|----------|-----------------------------|-----------|-------------------|---------------------------|-------------------|-------|
| 10a | Fabric Grade B/2 increase         | 4        |                             |           |                   |                           |                   |       |
| 11  | couch (3 seat)                    |          | approx.<br>78"X34"X33"      |           |                   |                           |                   |       |
| 11a | Fabric Grade B/2 increase         |          |                             |           |                   |                           |                   |       |
| 12  | arm chair                         | 14       | approx.<br>34"X33"X32"      |           |                   |                           |                   |       |
| 12a | Fabric Grade B/2 increase         | 14       |                             |           |                   |                           |                   |       |
| 13  | Modular/sectional options         |          | to fit common lounge spaces |           |                   |                           |                   |       |
| 13a | Fabric Grade B/2 increase         |          |                             |           |                   |                           |                   |       |
|     |                                   |          | wood                        |           |                   |                           |                   |       |
| 14  | coffee table (small)              | 8        | approx.<br>36"x18"x17"      |           |                   |                           |                   |       |
| 15  | coffee table (large)              |          | approx.<br>48"x24"x19"      |           |                   |                           |                   |       |
| 16  | Credenza/TV stand                 |          | approx.<br>24"X44"X30"      |           |                   |                           |                   |       |
| 17  | End tables                        |          | approx.<br>24"X24"X22"      |           |                   |                           |                   |       |
|     | <b>Other furniture not listed</b> |          |                             |           |                   |                           |                   |       |
|     | proposed list price discount      |          |                             |           |                   |                           |                   |       |
|     |                                   |          |                             |           |                   |                           |                   |       |
|     |                                   |          |                             |           |                   |                           |                   |       |
|     |                                   |          |                             |           |                   |                           |                   |       |
|     |                                   |          |                             |           |                   |                           |                   |       |
|     |                                   |          |                             |           |                   |                           |                   |       |
|     |                                   |          |                             |           |                   |                           |                   |       |
|     |                                   |          |                             |           |                   |                           |                   |       |
|     |                                   |          |                             |           |                   |                           |                   |       |
|     |                                   |          |                             |           |                   |                           |                   |       |

| Description | Quantity | proposed dimensions | unit cost | actual dimensions | delivery and installation | shipping/ freight | Total |
|-------------|----------|---------------------|-----------|-------------------|---------------------------|-------------------|-------|
|             |          |                     |           |                   |                           |                   |       |
|             |          |                     |           |                   |                           |                   |       |
|             |          |                     |           |                   |                           |                   |       |
|             |          |                     |           |                   |                           |                   |       |
|             |          |                     |           |                   |                           |                   |       |
|             |          |                     |           |                   |                           |                   |       |
|             |          |                     |           |                   |                           |                   |       |
|             |          |                     |           |                   |                           |                   |       |
|             |          |                     |           |                   |                           |                   |       |
|             |          |                     |           |                   |                           |                   |       |
|             |          |                     |           |                   |                           |                   |       |
|             |          |                     |           |                   |                           |                   |       |
|             |          |                     |           |                   |                           |                   |       |
|             |          |                     |           |                   |                           |                   |       |
|             |          |                     |           |                   |                           |                   |       |
|             |          |                     |           |                   |                           |                   |       |
|             |          |                     |           |                   |                           |                   |       |
|             |          |                     |           |                   |                           |                   |       |
|             |          |                     |           |                   |                           |                   |       |
|             |          |                     |           |                   |                           |                   |       |
|             |          |                     |           |                   |                           |                   |       |
|             |          |                     |           |                   |                           |                   |       |
|             |          |                     |           |                   |                           |                   |       |

Bid Form - Shepard; Delivery August 2026

General notes:

- Wood furniture - solid oak / veneer tops; color options: natural, other?
- Floor glides/feet - nylon, adjustable
- Delivery to include uncrating, assembly, installation and removal of all packaging material

| Description   | Quantity | proposed dimensions        | unit cost | actual dimensions | delivery and installation | shipping/ freight | Total |
|---|----------|----------------------------|-----------|-------------------|---------------------------|-------------------|-------|
| <b>1</b> mattress, innerspring, foam encased, nylon cover; bed bug proof and water proof  | 203      | 36"X80"X7"                 |           |                   |                           |                   |       |
| <b>2</b> Bunkable/loftable twin (XL) - bed ends (set), solid wood; with angle iron spring (easy connect)                            | 203      | 2.5" X 2.5" posts; 36"X80" |           |                   |                           |                   |       |
| <b>2a</b> loft kit option   | 25       |                            |           |                   |                           |                   |       |
| <b>3</b> 2 drawer stackable (must fit under the bed at its lowest setting); heavy duty drawer slides                                | 203      | 30 to 36" width            |           |                   |                           |                   |       |
| <b>4</b> Wardrobe - 2 door, 2 drawer, with shelf and rod; 270 degree, heavy duty hinges   | 203      | 36"x25"x72"                |           |                   |                           |                   |       |
| <b>4a</b> ADA compatible Wardrobe - 2 door, 2 drawer, with shelf and rod; 270 degree, heavy duty hinges and door slides; wire pulls | 203      | 36"x25"x72"                |           |                   |                           |                   |       |
| <b>5</b> Panel end Desk - solid oak, no drawers, ADA compliant  | 203      | 48"x24"x30"                |           |                   |                           |                   |       |

3/24/2025

request for quotes outline

|    | Description   | Quantity | proposed dimensions  | unit cost | actual dimensions | delivery and installation | shipping/ freight | Total |
|----|---|----------|--|-----------|-------------------|---------------------------|-------------------|-------|
| 5a | Table Desk - solid oak, pencil drawer, ADA compliant; heavy duty drawer slides      | 203      | 48"x24"x30"  |           |                   |                           |                   |       |
| 6  | Chair - solid oak, 2 position, armless, solid wood back and seat                    | 203      | 18"X22.5"X32"  |           |                   |                           |                   |       |
| 7  | <b>Dining</b><br>square or round kitchen table with legs (no pedestal base) (small) | 7        | wood<br>36" round  |           |                   |                           |                   |       |
| 7a | option  | 7        | 32" square   |           |                   |                           |                   |       |
| 8  | large   | 27       | 42" round  |           |                   |                           |                   |       |
| 8a | option  | 27       | 36"X60"  |           |                   |                           |                   |       |
| 9  | dining chairs - ladder back; solid wood   | 136      | 18"X22"  |           |                   |                           |                   |       |
| 10 | <b>living room/lounge</b><br>couch (2 seat)   | 34       | "soft" arm rests;<br>Fabric Grade A/1;<br>material options<br>=<br>washable/remov<br>able cloth with<br>pattern - no light<br>colors; option<br>faux leather<br>approx.<br>56"X33"X32" |           |                   |                           |                   |       |

|     | Description                       | Quantity | proposed dimensions         | unit cost | actual dimensions | delivery and installation | shipping/ freight | Total |
|-----|-----------------------------------|----------|-----------------------------|-----------|-------------------|---------------------------|-------------------|-------|
| 10a | Fabric Grade B/2 increase         | 34       |                             |           |                   |                           |                   |       |
| 11  | couch (3 seat)                    | 6        | approx.<br>78"X34"X33"      |           |                   |                           |                   |       |
| 11a | Fabric Grade B/2 increase         | 6        |                             |           |                   |                           |                   |       |
| 12  | arm chair                         | 44       | approx.<br>34"X33"X32"      |           |                   |                           |                   |       |
| 12a | Fabric Grade B/2 increase         | 44       |                             |           |                   |                           |                   |       |
| 13  | Modular/sectional options         |          | to fit common lounge spaces |           |                   |                           |                   |       |
| 13a | Fabric Grade B/2 increase         |          |                             |           |                   |                           |                   |       |
|     |                                   |          | wood                        |           |                   |                           |                   |       |
| 14  | coffee table (small)              | 30       | approx.<br>36"x18"x17"      |           |                   |                           |                   |       |
| 15  | coffee table (large)              | 5        | approx.<br>48"x24"x19"      |           |                   |                           |                   |       |
| 16  | Credenza/TV stand                 | 29       | approx.<br>24"X44"X30"      |           |                   |                           |                   |       |
| 17  | End tables                        | 6        | approx.<br>24"X24"X22"      |           |                   |                           |                   |       |
|     | <b>Other furniture not listed</b> |          |                             |           |                   |                           |                   |       |
|     | proposed list price discount      |          |                             |           |                   |                           |                   |       |
|     |                                   |          |                             |           |                   |                           |                   |       |
|     |                                   |          |                             |           |                   |                           |                   |       |
|     |                                   |          |                             |           |                   |                           |                   |       |
|     |                                   |          |                             |           |                   |                           |                   |       |
|     |                                   |          |                             |           |                   |                           |                   |       |
|     |                                   |          |                             |           |                   |                           |                   |       |
|     |                                   |          |                             |           |                   |                           |                   |       |
|     |                                   |          |                             |           |                   |                           |                   |       |
|     |                                   |          |                             |           |                   |                           |                   |       |
|     |                                   |          |                             |           |                   |                           |                   |       |

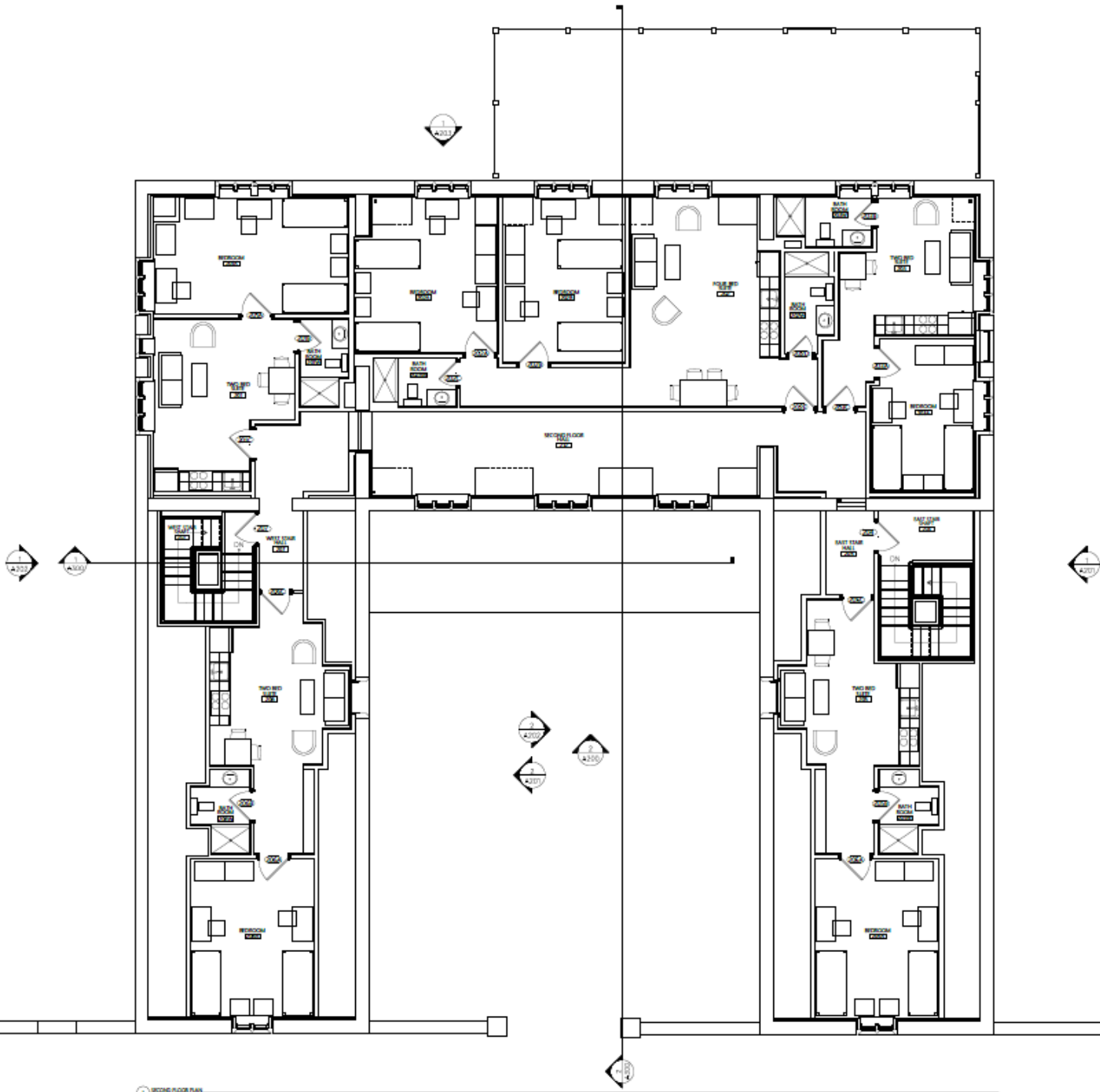
| Description | Quantity | proposed dimensions | unit cost | actual dimensions | delivery and installation | shipping/ freight | Total |
|-------------|----------|---------------------|-----------|-------------------|---------------------------|-------------------|-------|
|             |          |                     |           |                   |                           |                   |       |
|             |          |                     |           |                   |                           |                   |       |
|             |          |                     |           |                   |                           |                   |       |
|             |          |                     |           |                   |                           |                   |       |
|             |          |                     |           |                   |                           |                   |       |
|             |          |                     |           |                   |                           |                   |       |
|             |          |                     |           |                   |                           |                   |       |
|             |          |                     |           |                   |                           |                   |       |
|             |          |                     |           |                   |                           |                   |       |
|             |          |                     |           |                   |                           |                   |       |
|             |          |                     |           |                   |                           |                   |       |
|             |          |                     |           |                   |                           |                   |       |
|             |          |                     |           |                   |                           |                   |       |
|             |          |                     |           |                   |                           |                   |       |
|             |          |                     |           |                   |                           |                   |       |
|             |          |                     |           |                   |                           |                   |       |
|             |          |                     |           |                   |                           |                   |       |
|             |          |                     |           |                   |                           |                   |       |
|             |          |                     |           |                   |                           |                   |       |
|             |          |                     |           |                   |                           |                   |       |



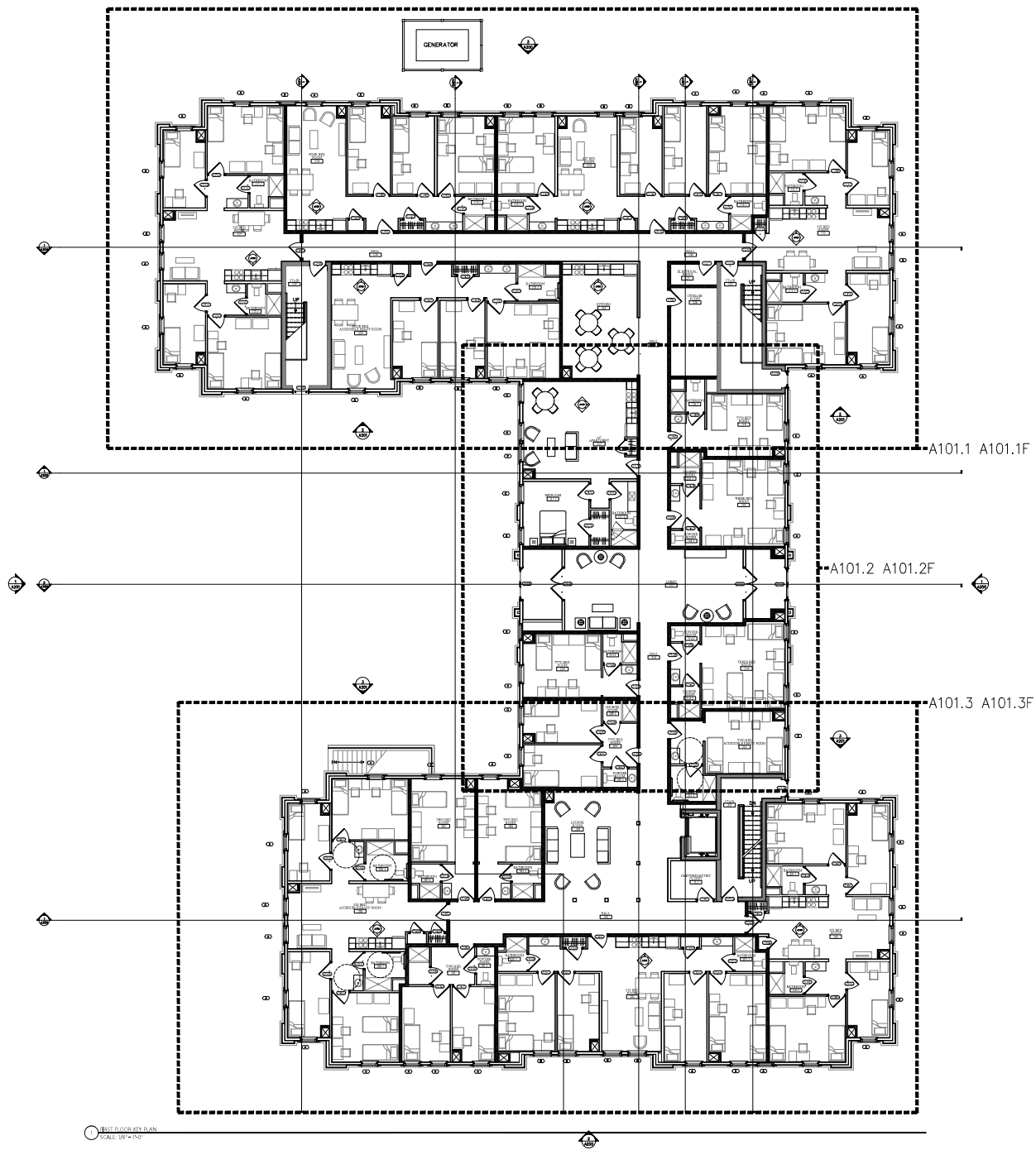


**SALVE REGINA UNIVERSITY**  
**MUNROE CENTER**  
**NEWPORT, RI**

|              |                        |
|--------------|------------------------|
| Project Name | CONSTRUCTION DOCUMENTS |
| Discipline   | SECOND FLOOR PLAN      |
| Sheet No.    | A102                   |
| Date         | 11.14.15               |



1 SECOND FLOOR PLAN  
 10/28/15 11:17



FIRST FLOOR KEY PLAN  
SCALE: 1/8" = 1'-0"



**PAUL WEBER**  
ARCHITECTURE  
449 Thames Street  
Suite 202  
Newport, RI 02840  
Tel: 401.849.3390  
Fax: 401.849.3397  
[www.pwarchitect.com](http://www.pwarchitect.com)



**SALVE REGINA UNIVERSITY  
NEW DORMITORY BUILDING  
NEWPORT, RI**

|              |                      |
|--------------|----------------------|
| JOB NO:      | 2582                 |
| Revision:    |                      |
|              |                      |
|              |                      |
|              |                      |
|              |                      |
|              |                      |
|              |                      |
|              |                      |
|              |                      |
|              |                      |
| Drawn:       | MEM # 197            |
| Checked:     |                      |
|              | FIRST FLOOR KEY PLAN |
| Date Issued: | 05.31.2005           |
| Scale:       | AS NOTED             |

© 2005 - PAUL WEBER ARCHITECTURE, LLC

**A101**